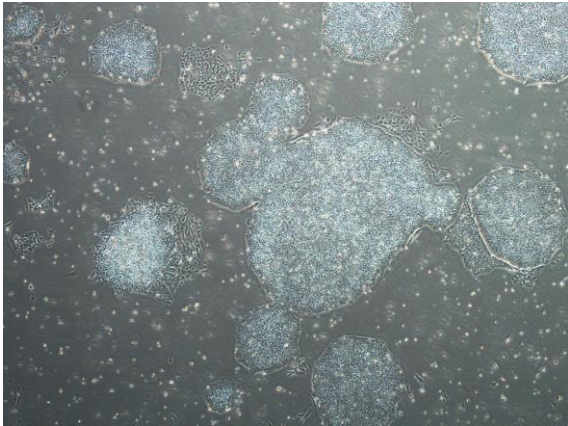
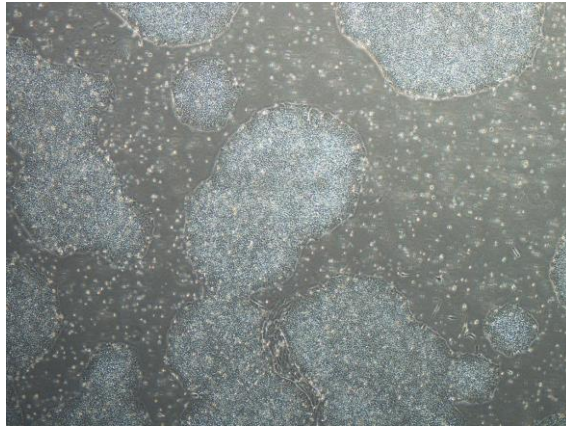


【 CiRA-j-1201 】 Morphology of iPSC colonies

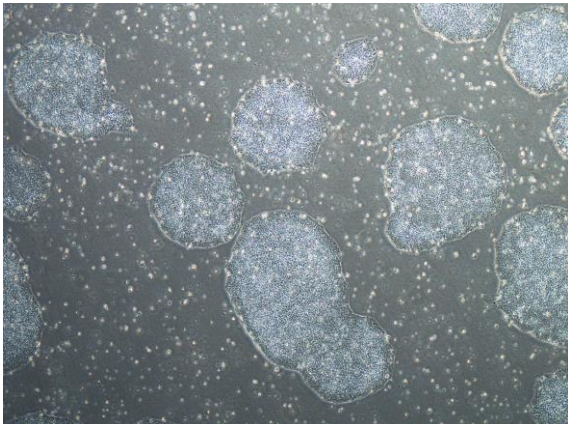
CiRA-j-1201-A: passage-3



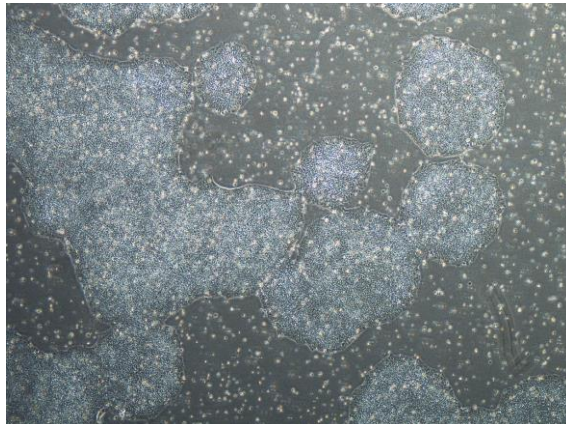
CiRA-j-1201-B: passage-3



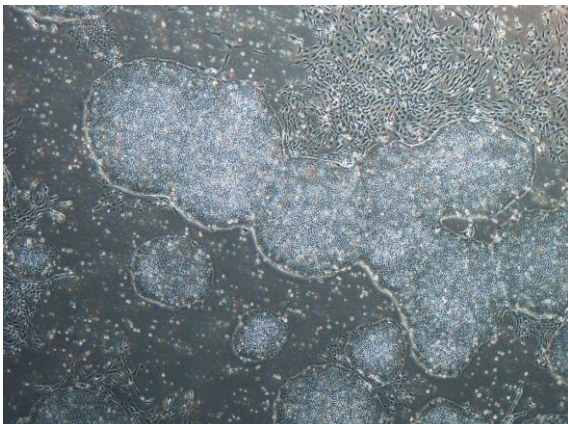
CiRA-j-1201-C: passage-3



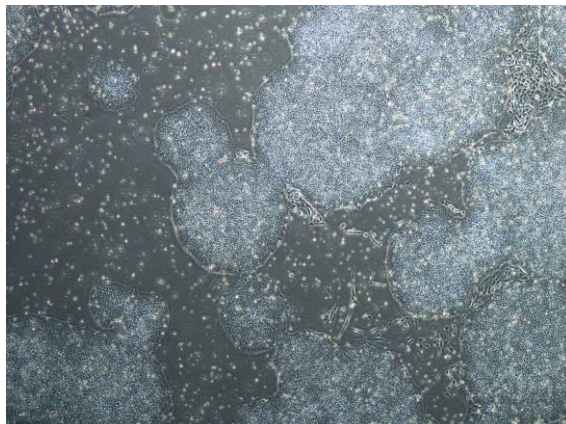
CiRA-j-1201-D: passage-3



CiRA-j-1201-E: passage-3



CiRA-j-1201-F: passage-3



(All images were captured at 4x magnification)